

LineAr 100 Rainwater Filter

- Suitable for roof areas up to 200m²
- Designed for installation directly into the tank
- Connects to standard 110mm storm water pipe
- Only 52mm height difference between inlet and overflow
- Unique horizontal design combines efficient operation with self-cleaning action
- Virtually all particles, moss, leaves, insects, etc. are washed out through the overflow
- No restriction or obstruction of water flow through the appliance (conforms to DIN1986)
- More than 90% efficient
- Minimum maintenance
- High quality stainless steel construction

The new *LineAr 100* rainwater filter from Wisy® AG is a new design with considerable benefits over similar products. The unique construction uses the same 280-micron mesh that is used in the Wisy® *Vortex* filter. This is the finest grade to be found in any rainwater filter, and is proven to be extremely effective at removing the most debris, whilst still maintaining high efficiency even at considerable flow rates.*



*over 90% efficient at 1.4 litres / second



UK agent and distributor for Wisy AG



Products for rainwater utilisation

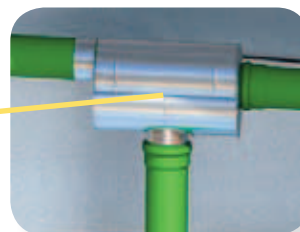


Function

The rainwater is drawn through the vertical mesh of the fine filter by adhesion, then collected and fed through the outlet to the storage tank.

Debris and particles too large for the filter are flushed through to the drain outlet by the action of water flowing down the surface of the filter. More than 90% of the rainwater entering the LineAr 100 is filtered and collected by this principle, giving clean, fresh water suitable for use in toilets and washing machines.

And of course, being naturally soft, it is the perfect water to use in the garden.



LineAr filter fitted into an underground tank. The difference in height between the inlet and overflow pipes is only 52mm.

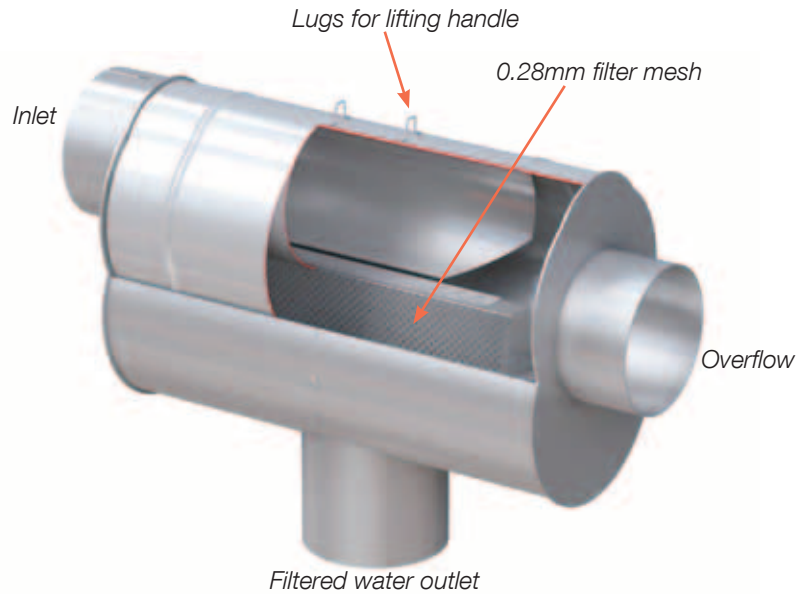
Like all Wisy® products *LineAr* filters are beautifully engineered from high quality stainless steel.

LineAr 100 Rainwater Filter

The unique design of the filter element exploits the adhesion principle as used in the well-known Wisy® Vortex filters.

Like the vortex filters, the mesh is a near vertical surface, so debris is easily rinsed off by the action of the flowing water. This gives a vastly improved performance over other in-tank filters that have a near horizontal mesh, which is prone to accumulate leaves and other debris.

The filtered water passes through the mesh and drops through the bottom outlet into a pipe fitted with a calming device. The very fine filter mesh does not permit any particles greater than 280 microns to pass through. This ensures maximum cleanliness of the harvested water.



The filter element is easily removed for cleaning using the lifting handle supplied



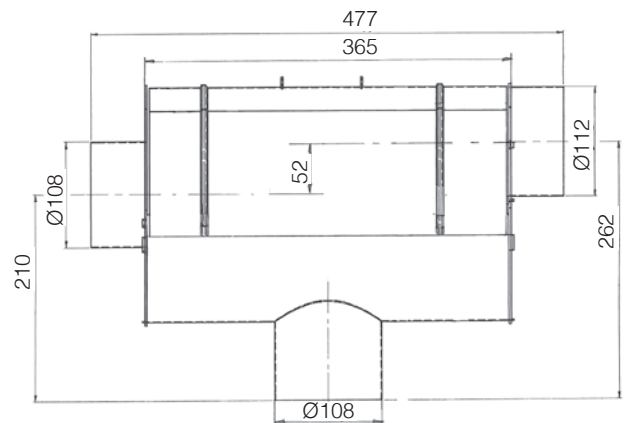
The compact design allows the filter to be easily fitted into the access shaft of an underground tank.

The filter can also be mounted on top of an above ground tank.

The LineAr filter is precision made from stainless steel and is both simple to fit and easy to maintain. Cleaning is required only 2-3 times each year and is achieved in minutes.

There are no moving parts and none that require replacing. LineAr filters are effective, efficient and inexpensive.

DIMENSIONS (mm)



Distributor:

Rainharvesting Systems Ltd.

The Green Shop
Calf Way, Bisley, Stroud,
Gloucestershire GL6 7BX

Tel: 01452 772000

Fax: 01452 772008

E-mail: sales@rainharvesting.co.uk

Website: www.rainharvesting.co.uk