

# HYDRAPRO® FT Rainwater Filters

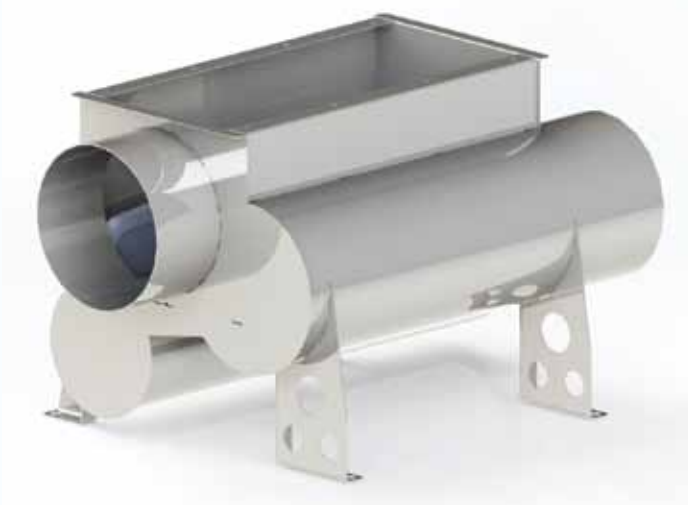
- Self cleaning rainwater filters for commercial and industrial installations
- Simple to install & maintain
- Only 80mm invert drop from inlet to waste outlet
- Extremely durable 2mm stainless steel construction AIS304
- For below ground or above ground use
- Can be fitted directly to tank body
- Optional high pressure cleaning jet can be manually or timer controlled
- Optional cover with neoprene seal and clamps
- Available for 200mm, 250mm and 300mm pipe
- Other sizes can be made to special order



## High Performance Industrial Grade Rainwater Filters

HYDRAPRO® rainwater filters set a new standard in water filtration. Robust, durable construction coupled with versatile design produces a low-profile in-line filter unit that is suitable for below ground within a pre-tank chamber or in-tank installation, or above ground, indoors or out.

As with all rainwater filters, these units have a single inlet and two outlets; one for the clean filtered water and one for the waste / excess water. The invert drop between the inlet and the waste outlet is only 80mm, less than any other filter on the market. This enables easier connection to existing drainage schemes, with minimum cost and disruption.



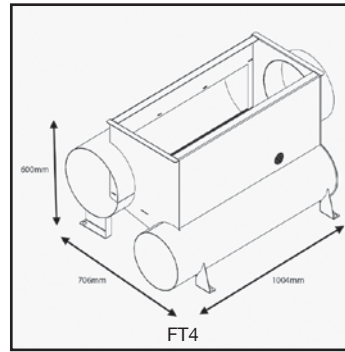
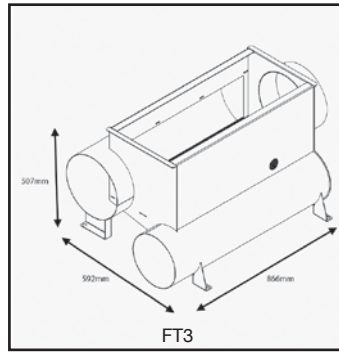
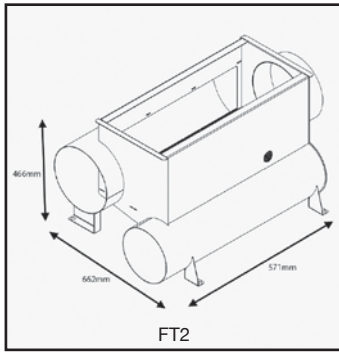
Easy-connect spigots allow quick and easy connection to standard drainage using off-the-shelf fittings.

HYDRAPRO® filters can optionally be supplied with backwash function and/or watertight cover.

HYDRAPRO® FT Filters Technical Data						
Model	Inlet size	Outlet to tank mm	Outlet to drain mm	Invert drop inlet to tank outlet mm	Invert drop inlet to drain outlet mm	Weight
FT2	200	150	200	149	80	20 kgs
FT3	250	200	250	205	80	31 kgs
FT4	300	250	300	249	80	52 kgs



# HYDRAPRO® FT IN-LINE RAINWATER FILTERS

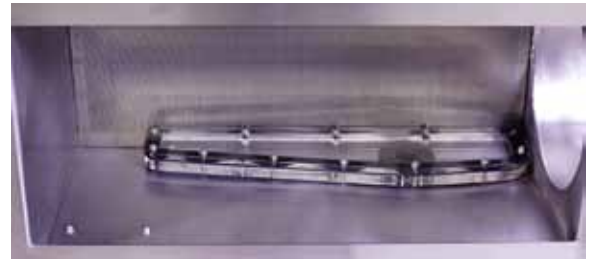


HYDRAPRO® filter dimensions. Other sizes are available on request.

When used indoors (e.g. plant room) HYDRAPRO® filters can be supplied with a close fitting cover and rubber seal. The cover clamps securely to the filter body to prevent water egress from the unit during excessive water flows.



Additionally, HYDRAPRO® filter units can be equipped with a unique high performance back-washing device. This connects to a supply from the rainwater pump to provide a pressure jet of water perpendicular to the filter grill that effectively cleans the surface of leaves and other debris. This effect can be seen in action in this YouTube video: <https://youtu.be/f-qr12CS0Ik>



This can be manually operated or can be easily automated using a solenoid valve and time switch, significantly reducing maintenance.

HYDRAPRO® filters are versatile. They can be used above ground if required or can be installed below ground within a chamber (e.g. concrete rings).

Alternatively, we can supply the filter pre-fitted in to a GRP tank. In this instance, the filter is mounted within an additional turret on the tank.

The turret has a base so there is no risk of falling in to the tank, and is fitted with a ladder for safe access.



FT filter pre-installed within turret of GRP tank

Distributor:

## Rainharvesting Systems Ltd.

The Green Shop  
Calf Way, Bisley,  
Stroud, Gloucestershire GL6 7BX  
Tel: 0845 223 5430  
Fax: 01452 772008  
E-mail: [sales@rainharvesting.co.uk](mailto:sales@rainharvesting.co.uk)  
Website: [www.rainharvesting.co.uk](http://www.rainharvesting.co.uk)

